

AN ISO 9001 : 2008 COMPANY



**RELIABLE HDPE PIPES**

**STRONG - DURABLE - TRUSTED**

Providing high-quality, leak-proof, and long-lasting  
HDPE piping solutions for a wide range of applications.  
Built for performance, designed for reliability.

Reliable HDPE Pipes – Flowing Towards Excellence!

**A PROMISE FOR STRONG**



## ABOUT US

Reliable HDPE Pipe is a leading manufacturer and supplier of **MDPE & HDPE Pipes, Pipe Fittings, PP Pipe Fittings, PP Compression Fittings, Industrial Valves, Butt Fusion Fittings, Ball Valves, and more.** We take pride in delivering high-quality, durable, and precisely engineered products under our brand name **Reliable HDPE Pipe.**

Our products are widely appreciated for their **easy installation, high durability, and superior finishing.** As one of the fastest-growing manufacturers in the industry, we offer **competitive pricing** while maintaining international quality standards.

## OUR VISION

At Reliable HDPE Pipe, we believe that our **customers and team members** are the foundation of our success. Our goal is to create **maximum value** for our customers by providing **innovative and high-quality piping solutions.**

We foster a **respectful and healthy work environment** within our company and maintain strong relationships with our customers. Our vision is to make **Reliable HDPE Pipe** the **most trusted name** in domestic and international markets for **Irrigation Equipment, HDPE Pipes, MDPE Pipes, PPR Pipes, Spray Pipes & Coils, HDPE Electro-fusion Fittings, PP Service Saddles, Flow Control Valves, Ferrules, and other piping solutions.**

## OUR MISSION

- ✓ Delivering Professional HDPE Pipe Solutions that meet international standards.
- ✓ Ensuring the safety, reliability, and efficiency of all our products.
- ✓ Commitment to customer satisfaction through high-quality products and services.
- ✓ On-time delivery with a focus on operational efficiency.
- ✓ Continuous innovation and development to meet evolving market needs.

With a commitment to **excellence, quality, and reliability,** Reliable HDPE Pipe stands as a trusted partner for all your piping and fitting needs.



## AWARDS & ACHIVEMENTS



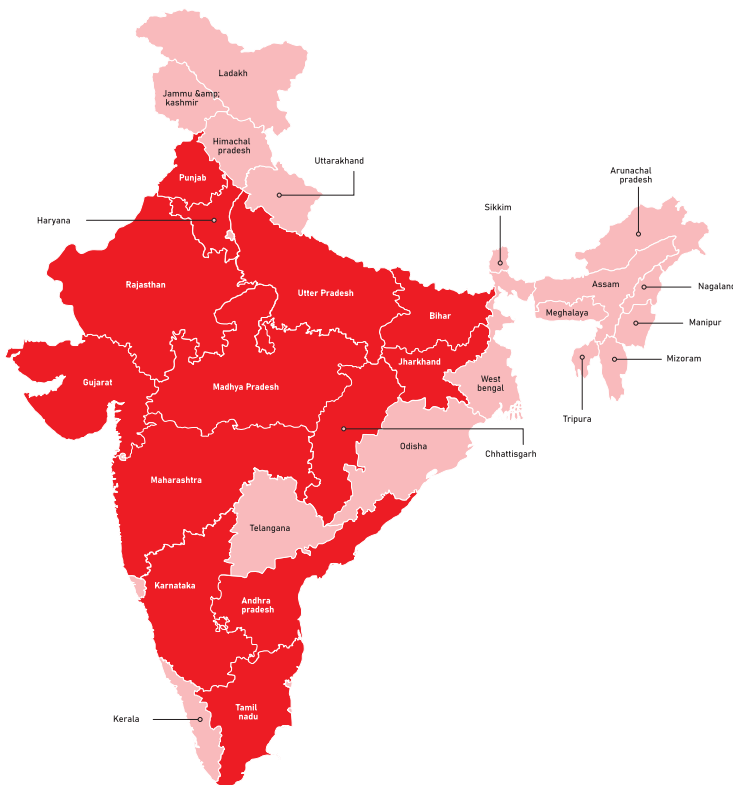
## GOVERNMENT APPROVALS & TRUSTED CERTIFICATIONS

Reliable HDPE Pipe is approved by various government bodies under PHED (Public Health Engineering Department) & Jal Jeevan Mission, ensuring quality, safety, and compliance with industry standards.

Our approvals include:

- ✓ Gujarat – Khedut Portal
- ✓ Madhya Pradesh – Madhya Pradesh Jal Nigam Maryadit
- ✓ Maharashtra – Maharashtra Jeevan Pradhikaran

These certifications reflect our commitment to delivering high-quality piping solutions that meet the strictest government standards for water supply and infrastructure projects.



### Government Approvals & Trusted Certifications

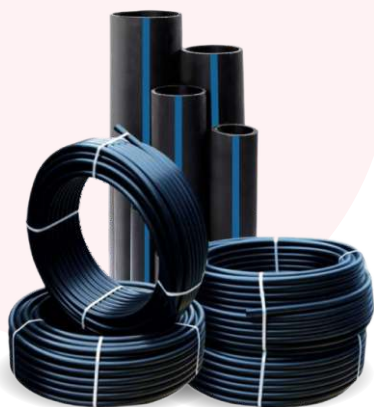
- 📍 Andhra Pradesh
- 📍 Bihar
- 📍 Chhattisgarh
- 📍 Gujarat
- 📍 Haryana
- 📍 Jharkhand
- 📍 Karnataka
- 📍 Maharashtra
- 📍 Madhya Pradesh
- 📍 Punjab
- 📍 Rajasthan
- 📍 Tamil Nadu
- 📍 Uttar Pradesh

## OUR PRODUCT RANGE

- HDPE/MDPE
- HDPE FITTINGS
- ELECTRO FUSION FITTINGS
- HDPE FABRICATED FITTINGS
- HDPE SPIGOT FITTINGS
- COMPRESSION FITTINGS
- MDPE FITTINGS
- BRASS FERRULE/BIB COCK



# HDPE PIPE & FITTINGS



**HDPE Elbow**  
20mm to 400mm



**HDPE TEE**  
20mm to 400mm



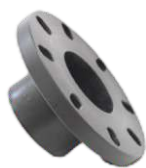
**HDPE End Cap**  
20mm to 400mm



**HDPE Flange**  
20mm to 400mm



**HDPE Long Neck**  
20mm to 400mm



**Long Neck with Flange**  
20mm to 400mm



**HDPE Reducer**  
20mm to 400mm



**HDPE Reducing TEE**  
20mm to 400mm



**Tail Piece with Flange**  
20mm to 400mm

## WALL THICKNESS & UNIT WEIGHT OF PIPES AS PER IS: 4984 - 2016

SDR	SDR 41		SDR 33		SDR 26		SDR 21		SDR 17		SDR 13.6		SDR 11		SDR 9		SDR 7.4		SDR 6	
PE 63	PN 2		PN 2.5		PN 3.2		PN 4		PN 5		PN 6		PN 8		-----		-----		-----	
PE 80	PN 2.5		PN 3.2		PN 4		PN 5		PN 6		PN 8		PN 10		PN 12.5		PN 16		PN 20	
PE 100	PN 3.2		PN 4		PN 5		PN 6		PN 8		PN 10		PN 12.5		PN 16		PN 20		-----	
Nominal OD dn, mm (1)	Emin. mm (2)	Emax mm (3)	Emin. mm (4)	Emax mm (5)	Emin. mm (6)	Emax mm (7)	Emin. mm (8)	Emax mm (9)	Emin. mm (10)	Emax mm (11)	Emin. mm (12)	Emax mm (13)	Emin. mm (14)	Emax mm (15)	Emin. mm (16)	Emax mm (17)	Emin. mm (18)	Emax mm (19)	Emin. mm (20)	Emax mm (21)
20	--	--	--	--	--	--	--	--	--	--	--	--	2.0	2.3	2.3	2.7	2.8	3.2	3.4	3.9
25	--	--	--	--	--	--	--	--	--	--	2.0	2.3	2.3	2.7	2.8	3.2	3.4	4.9	4.2	4.8
32	--	--	--	--	--	--	--	--	2.0	2.3	2.4	2.8	3.0	3.4	3.6	4.1	4.4	5.0	5.4	6.1
40	--	--	--	--	--	--	2.0	2.3	2.4	2.8	3.0	3.4	3.7	4.2	4.5	5.1	5.5	6.2	6.7	7.5
50	--	--	--	--	--	--	2.4	2.8	3.0	3.4	3.7	4.2	4.6	5.2	5.6	6.3	6.8	7.6	8.4	9.4
63	--	--	--	--	2.0	2.3	3.0	3.4	3.8	4.3	4.7	5.3	5.8	6.5	7.0	7.8	8.6	9.6	10.5	11.7
75	2.0	2.3	2.3	2.7	2.5	2.9	3.6	4.1	4.5	5.1	5.6	6.3	6.9	7.7	8.4	9.4	10.2	11.4	12.5	13.9
90	2.2	2.6	2.8	3.2	2.9	3.3	4.3	4.9	5.3	6.0	6.7	7.5	8.2	9.2	10.0	11.1	12.2	13.6	15.0	16.6
110	2.7	3.1	3.4	3.9	3.5	4.0	5.3	6.0	6.5	7.3	8.1	9.1	10.0	11.1	12.3	13.7	14.9	16.5	18.4	20.4
125	3.1	3.6	3.8	4.3	4.3	4.9	6.0	6.7	7.4	8.3	9.2	10.3	11.4	12.7	13.9	15.4	16.9	18.7	20.9	23.1
140	3.5	4.0	4.3	4.9	4.9	5.5	6.7	7.5	8.3	9.3	10.3	11.5	12.8	14.2	15.6	17.3	19.0	21.0	23.4	25.9
160	4.0	4.5	4.9	5.5	5.4	6.1	7.7	8.6	9.5	10.6	11.8	13.1	14.6	16.2	17.8	19.7	21.7	24.0	26.7	29.5
180	4.4	5.0	5.5	6.2	6.2	7.0	8.6	9.6	10.6	11.8	13.3	14.8	16.4	18.2	20.0	22.1	24.4	27.0	30.0	33.1
200	4.9	5.5	6.1	6.9	7.0	7.8	9.6	10.7	11.8	13.1	14.8	16.4	18.2	20.2	22.3	24.7	27.1	30.0	33.4	36.9
225	5.5	6.2	6.9	7.7	7.7	8.6	10.8	12.0	13.3	14.8	16.6	18.4	20.5	22.7	25.0	27.6	30.5	33.7	37.5	41.1
250	6.1	6.9	7.6	8.5	8.7	9.7	12.0	13.3	14.8	16.4	18.4	20.4	22.8	25.2	27.8	30.7	33.8	37.3	41.7	46
280	6.9	7.0	8.5	9.5	9.7	10.8	13.4	14.9	16.5	18.3	20.6	22.8	25.5	28.2	31.2	34.5	37.9	41.8	46.7	51.5
315	7.7	8.6	9.6	10.7	10.8	12	15.0	16.6	18.6	20.6	23.2	25.7	28.7	31.7	35.0	38.6	42.6	47.0	52.5	57.9
355	8.7	9.7	10.8	12.0	12.2	13.6	17.0	18.8	20.9	23.1	26.2	29	32.3	35.7	39.5	43.6	48.0	52.9	59.2	65.3
400	9.8	10.9	12.2	13.6	13.7	15.2	19.1	21.2	23.6	26.1	29.5	32.6	36.4	40.2	44.5	49.1	54.1	59.7	66.7	73.5
450	11.0	12.2	13.7	15.2	15.4	17.1	21.5	23.8	26.5	29.3	33.1	36.6	41.0	45.2	50.0	55.1	60.9	67.1	75.0	82.6
500	12.2	13.6	15.2	16.9	19.3	21.4	23.9	26.4	29.5	32.6	36.8	40.6	45.5	50.2	55.6	61.3	67.6	74.5	83.4	91.9



## MDPE PIPE & FITTINGS



**Equal Elbow**  
20mm to 110mm



**90° TEE**  
20mm to 110mm



**Coupler**  
20mm to 110mm



**FTA Brass Elbow**  
Heavy Duty



**MTA Brass**  
20mm to 110mm



**MTA Brass Elbow**  
20mm to 110mm



**End Cap**  
Heavy Duty



**FTA Brass/SS**  
20mm to 110mm



**MDPE Ball Valve**  
20mm

Nominal Outside Diameter mm	Minimum Wall Thickness ( $e_{min}$ ) mm			
dn	SDR 9	SDR 11.0	SDR 13.6	SDR 17.6
20	3.0	3.0	2.3	2.3
25	3.0	3.0	2.3	2.3
32	3.6	3.0	2.3	2.3
40	4.5	3.7	3.0	2.3
50	5.6	4.6	3.7	2.9
63	7.1	5.8	4.7	3.6
75	8.4	6.8	5.5	4.3
90	10.1	8.2	6.6	5.2
110	12.3	10.0	8.1	6.3
125	14.0	11.4	9.2	7.1
140	15.7	12.7	10.3	8.0
160	17.9	14.6	11.8	9.1
180	20.1	16.4	13.3	10.3
200	22.4	18.2	14.7	11.4
225	25.1	20.5	16.6	12.8
250	27.9	22.7	18.4	14.2
280	31.3	25.4	20.6	16.0
315	35.2	28.6	23.2	17.9
355	39.7	32.3	26.1	20.2
400	44.7	36.4	29.4	22.8

# PLB DUCT PIPE



## PLB DUCT PIPE SIZE CHART

Size	32mm / 26mm	40mm / 33mm	50mm / 42mm	63mm / 50mm	110mm / 80mm
Outside Diameter	32mm + 0.3mm - 0.0mm	40mm + 0.4mm - 0.0mm	50mm + 0.5mm - 0.0mm	63mm + 0.6mm - 0.0mm	110mm + 1.0mm - 0.0mm
Wall thickness	3.0mm ± 0.2mm	3.5mm ± 0.2mm	4.0mm ± 0.3mm	6.5mm ± 0.4mm	15.0mm ± 0.6mm
Thickness of the inner layer	Minimum: 0.24mm Maximum: 0.36mm	Minimum: 0.28mm Maximum: 0.42mm	Minimum: 0.32mm Maximum: 0.48mm	Minimum: 0.36mm Maximum: 0.54mm	Minimum: 0.56mm Maximum: 0.84mm
Standard Length	1000 ± 100 Meters	1000 ± 100 Meters	1000 ± 100 Meters	500 ± 50 Meters	200 ± 20 Meters
Maximum Outer Diameter of Optical fiber cable that can be installed by blowing technique	12mm	16mm	21mm	25mm (144 Fiber)	40mm (576 Fiber)

# SPRINKLER PIPE & FITTINGS



63mm to 110mm



K-Type Tee



K-Type Elbow



K-Type End cap



K-Type Foot Batten



L-Type Tee



L-Type Elbow



L-Type End cap



L-Type Foot Batten

## DWC PIPE & FITTINGS



Sr No.	Nominal Size mm	Nominal Outside Diameter mm	Tolerances mm	Min Inside Diameter mm	Standard Length Meter
1	40	40	+0.8	31	800mtr / 500mtr / 100mtr
2	50	50	+1.0	38	500mtr / 100mtr.
3	63	63	+1.2	51	300mtr / 250mtr / 100mtr
4	75	75	+1.4	61	6mtr
5	90	90	+1.7	75	6mtr
6	110	110	+2.0	96	6mtr
7	120	120	+2.2	103	6mtr
8	160	160	+2.9	135	6mtr



"O" Ring



Bend



Tee



Cross Tee



Cable Gland Hood



Coupler



End-Cap



## HDPE SPIGOT FITTINGS



**Spigot Elbow**  
63mm to 400mm



**Spigot TEE**  
63mm to 400mm



**Spigot End Cap**  
63mm to 400mm



**Spigot Tail Piece**  
63mm to 315mm



**Spigot Reducer**  
63mm to 315mm



**Spigot Reducing TEE**  
63mm to 315mm

## PP SERVICE SADDLES (PN:10)



**PP Brass Saddle**  
32mm to 315mm



**PP Brass Saddle**  
32mm to 315mm



**PP Blue Saddle**  
32mm to 315mm



**PP Plain Saddle**  
32mm to 315mm



**PP Reducing Saddle**  
32mm to 315mm



**PP Integrated Saddle**  
32mm to 315mm

## HDPE electro fusion fitting



**Coupler**  
63mm to 315mm



**TEE**  
63mm to 315mm



**Elbow**  
63mm to 315mm



**End Cap**  
63mm to 315mm



**45° Elbow**  
63mm to 315mm



**Reducer**  
63mm to 315mm



**Saddle** 63mm to 315mm



**Taping Saddle**  
63mm to 315mm



## HDPE Fabricated FITTINGS (PN:10)



**Fabricated TEE**  
63mm to 630mm



**Fabricated Elbow**  
63mm to 630mm



**Fabricated Cross**  
20mm to 315mm



**Fabricated 45° Elbow**  
63mm to 630mm



**Fabricated Y**  
63mm to 630mm

## BRASS & SS FITTINGS



**Brass Ball Valve**  
1/2 Inch



**Brass Ferrule**  
1/2 Inch

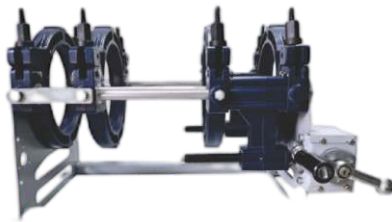


**SS FCV**  
1/2 Inch



**Brass Bib Cock**  
1/2 Inch

## OTHER PRODUCTS



**HDPE Welding Machine**



**Mirror**  
63mm to 630mm

GET IN TOUCH

# RELIABLE POLYMERS

Sopan Ind. Zone, Plot No. 7, Opp. Charbhuja, Nr. Atul Auto,  
NH 27, Shapar (Veraval)-360024. Mob. 94267 19561 / 90994 96124